



CADRE FORENSICS

TopMatch-3D Versa



Introducing the latest addition to Cadre's courtroom-proven VCM platform - the newly redesigned Versa Scanner. The Cadre TopMatch-Versa system uses the same gel technology as our validated desktop system to rapidly capture high-resolution, 3D surface topographies. With a lateral spacing interval of approximately 2.75 microns per pixel, the Versa scanning unit provides accurate measurements which can be analyzed using the same TopMatch software as our desktop system



Designed for flexibility and mobility, the Cadre TopMatch-Versa scanner can be powered from a provided ruggedized laptop and taken to the field or moved between locations. With the ability to share scans between systems, you can easily collaborate with colleagues in different locations. Equip the Versa unit with a mobile hotspot and you can even transmit scans back to your primary lab. When not in use, the system collapses into a compact size for easy transportation in the provided rugged hard case.

The Versa system excels at scanning cartridge cases, bullets, damaged bullets, bullet fragments, and casts. The scanning head can also be detached from the assembly base for scanning a range of non-ammunition tools and toolmark types. The Cadre TopMatch Versa scanner is a perfect complement to the Desktop system.



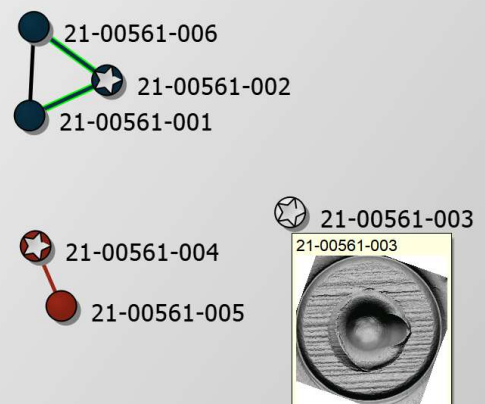
Triage with the TopMatch-3D Systems

- Cadre's Triage functionality increases lab throughput by rapidly determining relationships among groups of evidence.
- Triage utilizes the same traceable 3D surface measurements collected on the Desktop or Portable systems for VCM source conclusions. Thus, one traceable scan can be used for triage, database search, and source conclusions.

Key Triage Features:

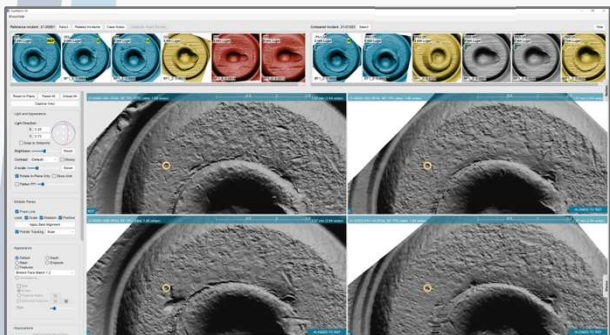
- Rapid Automatic Algorithm-Based Grouping
- Automatic Determination of Most Well Marked Specimen
- Number of Firearms Determination
- Comparison-Quality Scans
- Visual Representation of Examiner and Algorithm Determined Relationships

Specimen Triage Graph

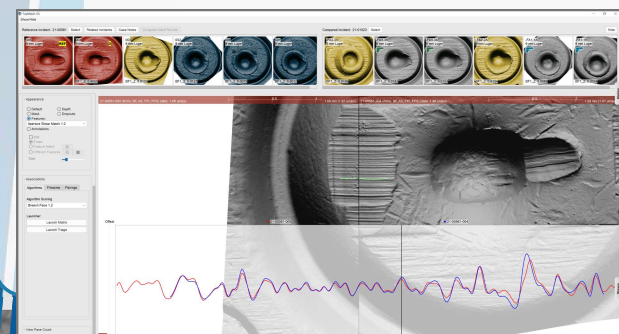




Remote VCM



- Cadre's suite of connectivity tools allows access within and between laboratory sites
- All VCM features are available from our **Remote VCM Client software** which can run on an examiner's desktop or laptop computer both onsite or offsite without additional charge
- Remote connectivity allows examiners to complete work on a separate machine without disrupting scan collection
- Cadre Nexus enables data sharing between labs (within or between agencies) on a secure encrypted cloud server platform or via your own hosted server.

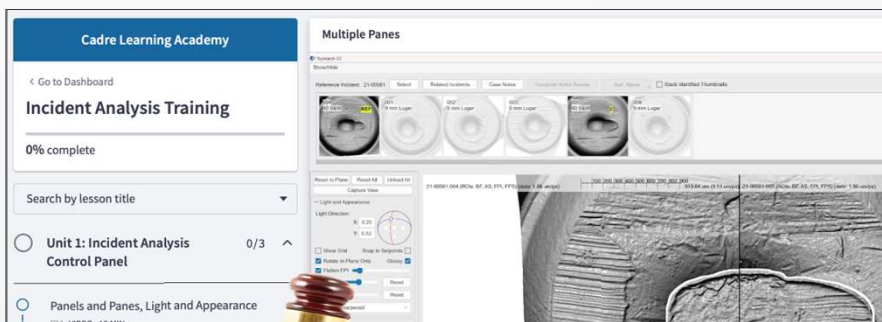


Cadre Nexus



Training and Validation

- Cadre's technology platform is supported by a suite of included training materials. Multiple online courses, videos, webinars, and manuals simplify the implementation and use of Cadre VCM. Comprehensive materials cover validation through scan acquisition, analysis, and reporting. Using these tools, all agencies can be successful with adopting VCM.
- At Cadre, we pride ourselves on being pioneers in VCM. Our commitment to excellence is reflected in our groundbreaking work on the first large-scale VCM study, known as VCMERS (Chapnick, JFS 2021). We believe in the importance of validating VCM across the discipline, which is why we are dedicated to collaborating with federal agencies and academic research labs. Through these partnerships, we are able to continue advancing the field of VCM and ensure that our technology is tested and validated to the highest standards. At Cadre, we are not just providers of cutting-edge VCM technology, we are also committed to being leaders in the field.



Did You Know?

- Cadre was the first system validated by federal, state, and local labs for use in casework in the United States.
- Cadre TopMatch VCM evidence has been admitted into the US court system in multiple cases, including a successful Daubert hearing.



we can set up with the prism line where we can compare

COMPLETE & CONTINUE →