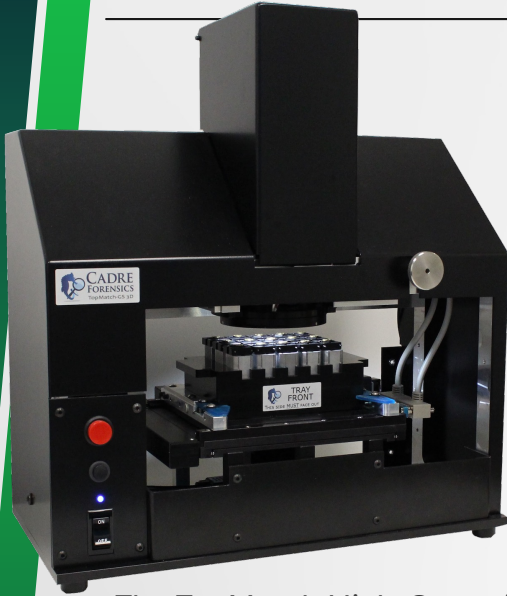




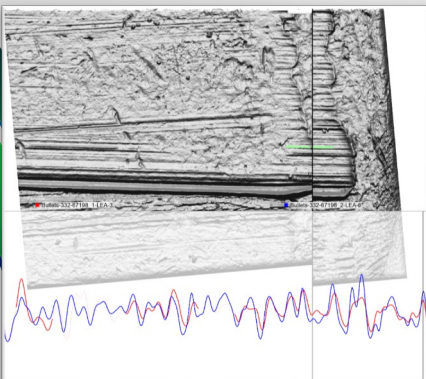
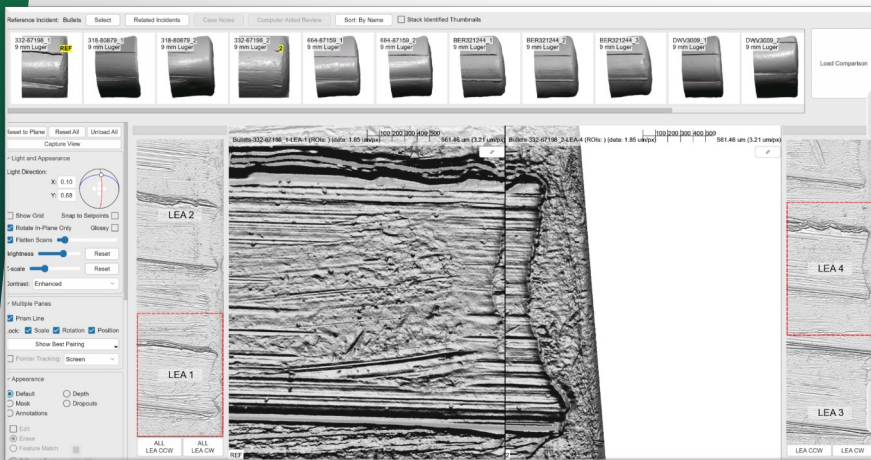
# CADRE FORENSICS

## TopMatch-3D Bullets



The industry-leading TopMatch High-Capacity Desktop Scanner utilizes advanced imaging techniques with proprietary gel-based technology to scan the 3D surface topography of fired bullets encountered in firearm examination. TopMatch scanning systems provide unparalleled accuracy, efficiency, and analytical tools.

The TopMatch High-Capacity Desktop Scanner is equipped with a tray designed for batch scanning up to two intact bullets at a time. This process is automated, scanning the full 360 degrees around the bearing surface of the bullet.



**Quality:** TopMatch 3D bullet scans are highly detailed and examination quality, allowing accurate source conclusions to be rendered.

**Efficiency:** Compare bullet evidence using Cadre's Virtual Comparison Microscopy (VCM) software. Cadre VCM provides innovative tools for visualization, analysis, access, and documentation to improve throughput and accuracy.

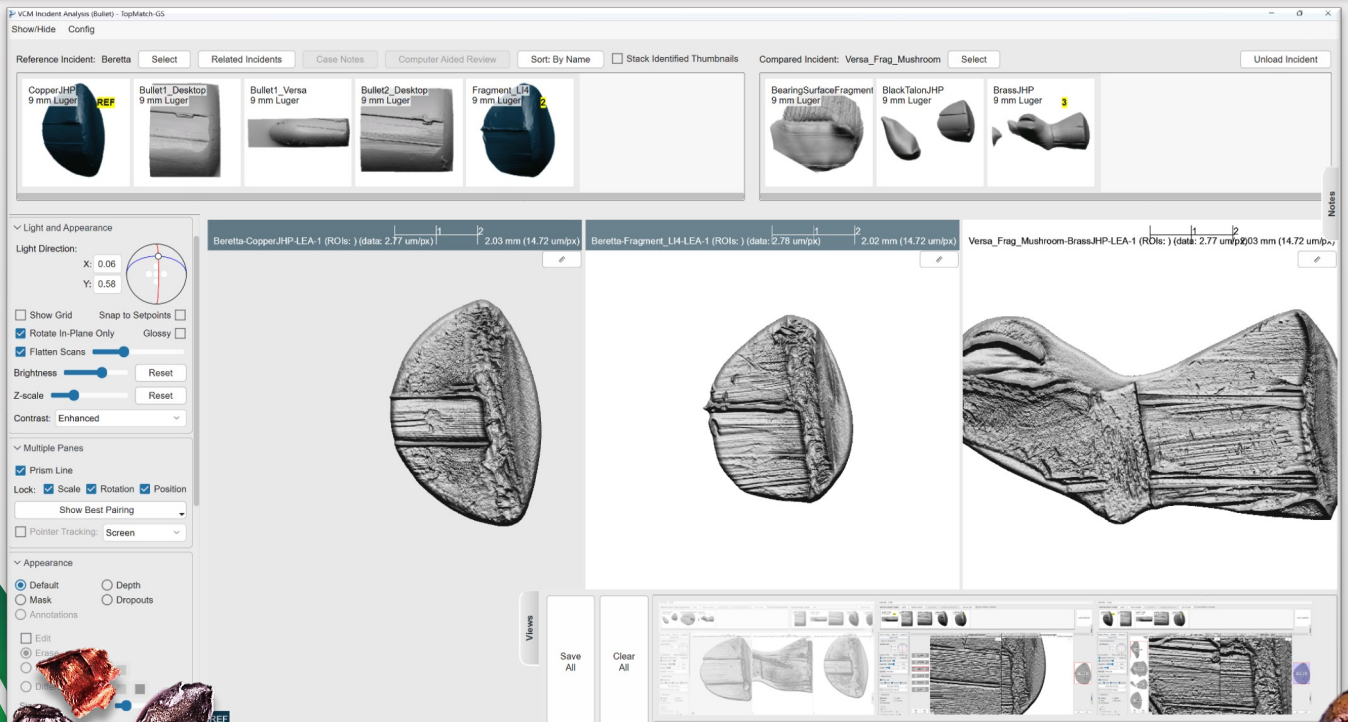
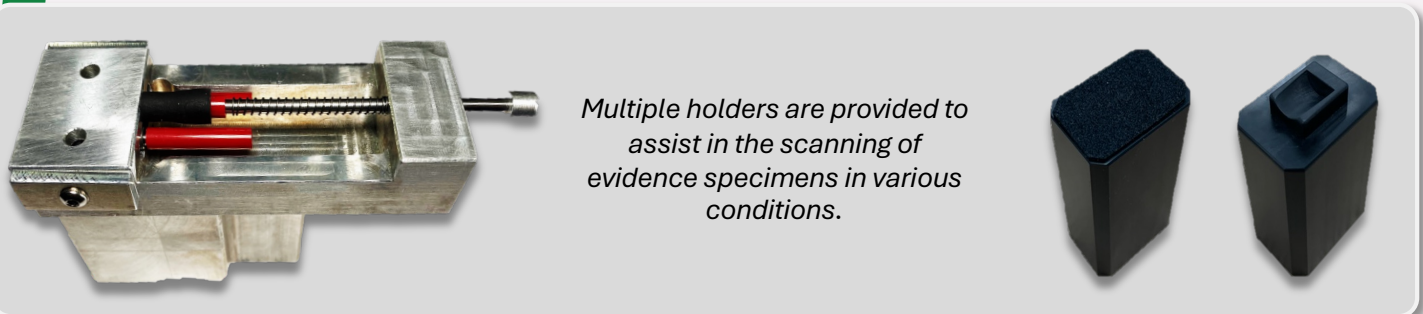
**Algorithms:** Cadre algorithms are purpose-built using broad data sets. Algorithms assist crime lab analysts by providing objective similarity scores and useful comparison tools such as automated phase alignment and striated profile visualization.

Chicago, Illinois (312) 620-9958  
Forensics@CadreForensics.com  
www.CadreForensics.com \*

# TopMatch-3D Damaged Bullets



The TopMatch-3D Versa Scanner excels at scanning pristine and oddly shaped evidence specimens such as damaged, mushroomed, and fragmented bullets. Using the same proprietary gel-based technology as the Cadre Desktop scanner, the unique design allows the Versa to scan a wide variety of specimens.



**CADRE FORENSICS**

Chicago, Illinois (312) 620-9958  
Forensics@CadreForensics.com  
www.CadreForensics.com

